



Change Manager Installation & Configuration Instructions

Client Installation instructions

- **dbMaestro Client**

dbMaestro client is a user friendly interface that enables users to compare, synchronize and manage SQL Server databases, and create scripts that can be used to perform structure and data migrations to update databases.

The dbMaestro Client installation package should be installed on any client computer from which change management is performed.

- **dbMaestro client installation prerequisites**

In order to install dbMaestro client, the following prerequisites must be installed on your system:

1. One of the following operating systems

- Windows 2003 Server edition
- Windows 2000 Server edition
- Windows XP Professional edition
- Windows 2000 Professional edition

2. Microsoft .NET Framework 1.1 , you can download .NET framework 1.1 by clicking the following link:

<http://download.microsoft.com/download/a/a/c/aac39226-8825-44ce-90e3-bf8203e74006/dotnetfx.exe>

3. Microsoft SQL Server 2000 - Client Tools only

Important notice: if one of the prerequisites above is not installed, dbMaestro client installation will alert you, and setup will not continue.

Server Installation process

the file and click on setup.exe to install dbMaestro server on your system.
The following is a step by step review of the dbMaestro client installation process:

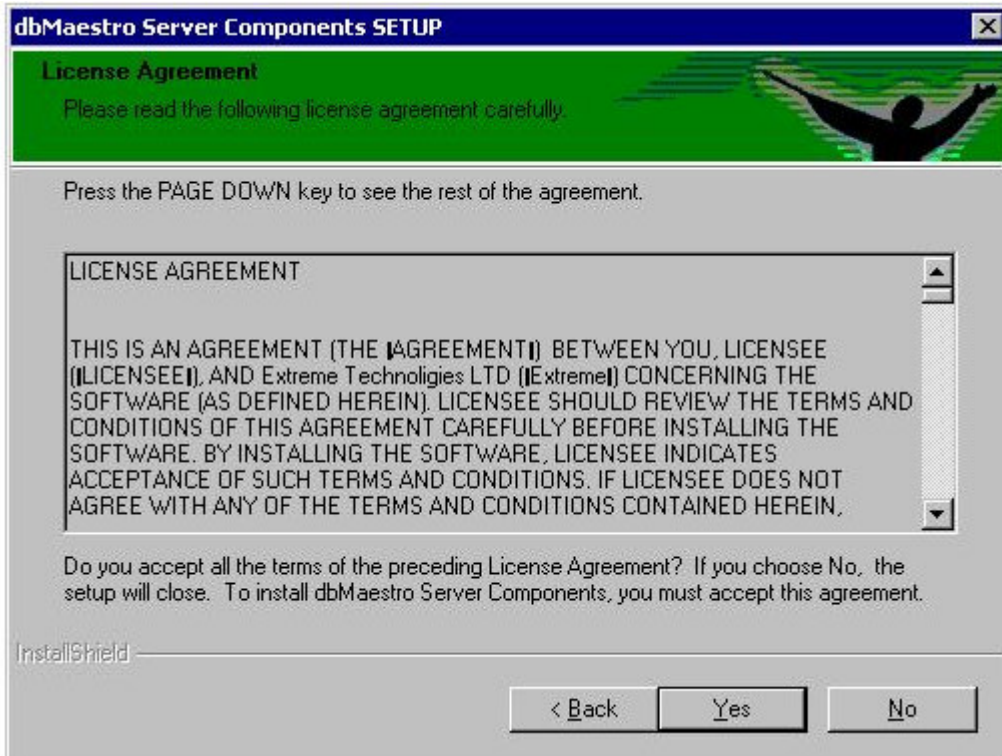
Step 1 - Welcome to the installation wizard

Double clicking the setup.exe file will bring up the installation wizard. Click the **next** button to begin the installation.



Step 2 - License agreement

Read the License agreement and accept the terms by selecting the **Yes** button. If you do not wish to accept the terms in the license agreement, click the **No** button. The installation process will stop and you will exit from setup.



Step 3 - Database Information

In this screen you have to provide your database information for dbMaestro.

Database Location Files: Select the directory in which you wish the dbMaestro Server Components data files to be copied to.

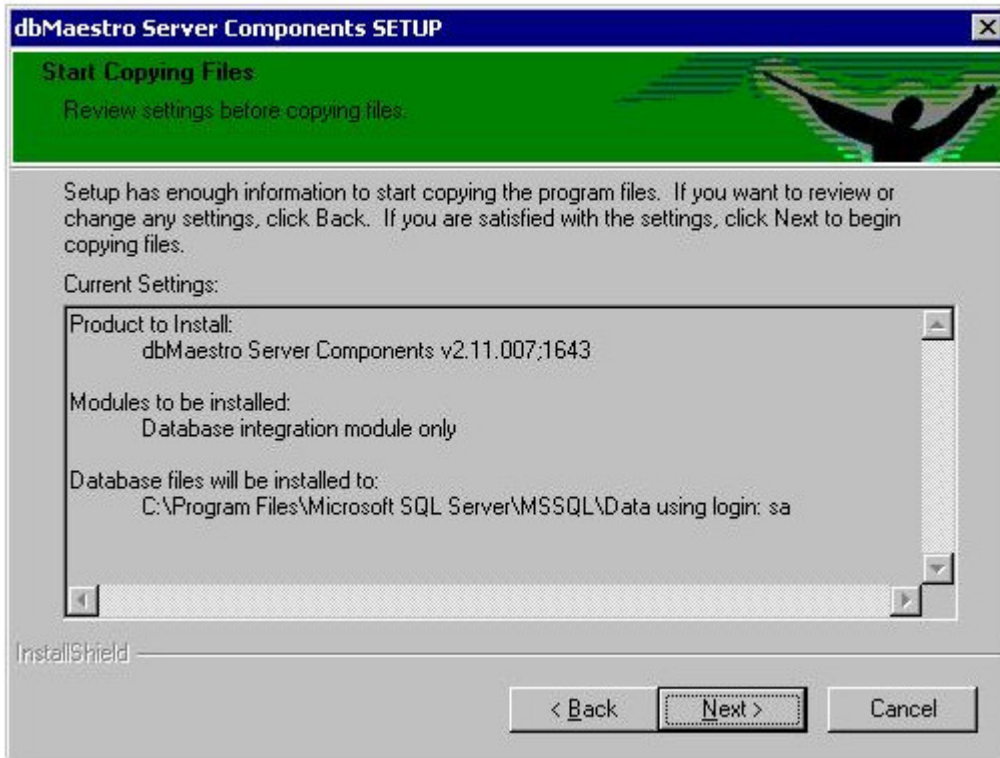
DBA Information: Type in the user name (Admin User Name), the password (Admin Password) and the server name (SQL Instance) to which dbMaestro Server components will be installed.

The screenshot shows the 'dbMaestro Server Components SETUP' window with the 'Database Information' tab selected. The window title bar includes a close button. The main area has a green header with the text 'Database Information' and 'Insert DBA Information'. Below this is a section for 'Database Location Files' with a folder icon and a text box containing 'C:\Program Files\Microsoft SQL Server\MSSQL\Data', followed by a 'Browse' button. The next section is 'DBA Information' with a help icon and text explaining the need for details. It contains three input fields: 'Admin UserName' with 'sa', 'Admin Password' (empty), and 'SQL Instance' with 'ETRUST3'. At the bottom, there are 'Back', 'Next >', and 'Cancel' buttons. The 'InstallShield' logo is visible in the bottom left corner.

Step 4 - Ready to Install the Program

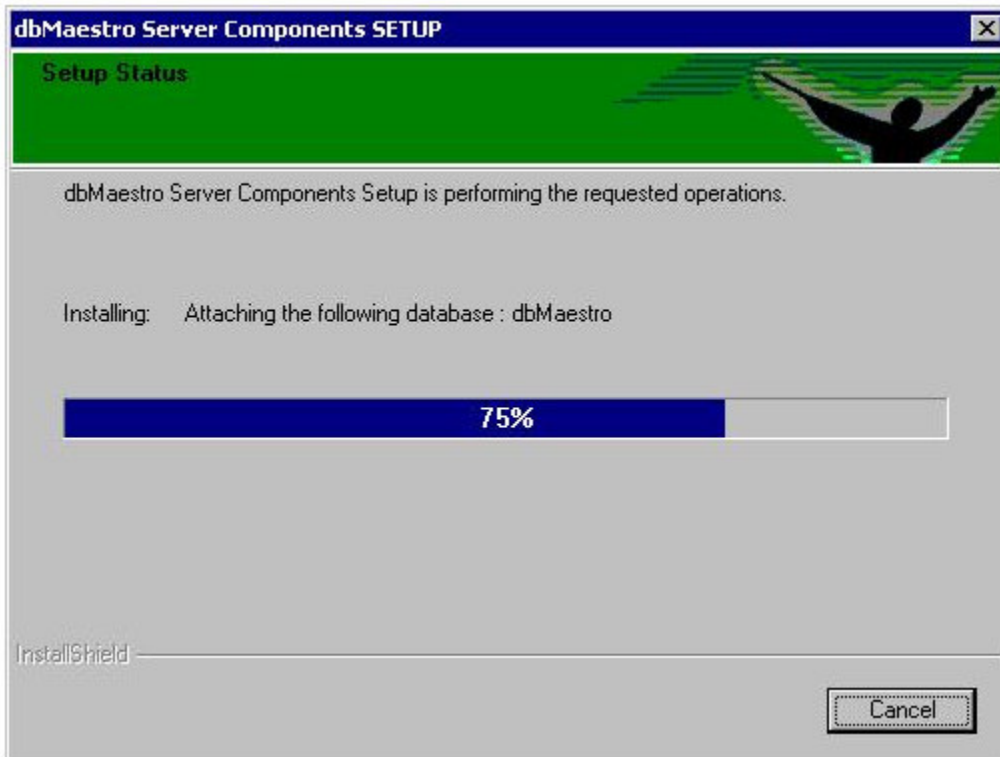
The wizard is now ready to begin the installation.

You can review your installation settings before clicking the **Next** button. . if you want to review or change any of your installation settings, click **back** . clicking the **Next** button will begin the installation.



Step 5 - Installing dbMaestro

dbMaestro Server components are now being installed on your computer. This includes creating the dbMaestro database and dbMaestro repository on your server. This step may take several minutes.



step 6 - Installation wizard completed

This is the final step. dbMaestro Server components are now successfully installed on your computer. Click **Finish** to exit the installation.



Installation is completed. Your dbMaestro Server is ready for use.

Activation instructions

Getting your dbMaestro license:

1. In order to use dbMaestro you need to obtain a valid activation key.

2. Running dbMaestro for the first time, will pop up the "Online Activation" window, or "Manual Activation" if you do not have a connection to the internet.

(see fig.1). The "Manual Activation" window can also be accessed via the menu bar: **help -> update license information**.



(Fig. 1)

3. Your Installation ID is displayed under the "Installation ID" title (see "Installation ID" in Fig.1). The Activation key is required to activate your copy of dbMaestro.

4. In order to obtain and activate your license, follow the step by step instructions in the activation window:

4.1. If your computer has online internet connection, click the 'Online Activation' button.



the online form below will be displayed. (SEE Fig. 2).

Once you complete filling out the online form and click the 'send' button, an activation key will be emailed to you within one business day.

If you do not have an internet connection on your computer, the "Online Activation" button will be disabled. In this case, click the 'Locate Installation ID File' button and email the dbMaestro_installation_id.lic file to us at: info@extreme.co.il

4.2. Once you receive your Activation key file via email, load the file by clicking the 'Load Activation Key File' button. Your key is now pasted in the Activation Key line .

4.3. Activate dbMaestro by clicking the 'Activate dbMaestro' button.

License information			
*Installation ID file	<input type="text" value="IDt6ZRI40Qc6Bd+Tg9FpzoaDQo\"/>		
Contact information			
*First name	<input type="text" value="Jane"/>	*Last name	<input type="text" value="Adam"/>
*Email	<input type="text" value="jane@company.com"/>	*Company	<input type="text" value="ASQ"/>
Country	<input type="text" value="USA"/>	Address	<input type="text"/>
*Tel.	<input type="text" value="03-9374659"/>		
Organization			
*Organization Size	<input type="text" value="-- Number of employees --"/>		
How did you hear about dbMaestro?	<input type="text"/>		
Notify me about product updates and related information	<input checked="" type="checkbox"/>		
 Clear  Send			

For additional information please contact us:

Tech Support
dbMaestro
Tel: 972 - 3 - 9248558
eMail: support@dbMaestro.com